



BELDEN

DCX System

Maximize signal integrity and usability with the DCX high-density end-to-end fiber infrastructure solution



Achieve fast, easy operation and management of terminations in fiber-dense environments



Emerging Technology Increases Fiber Connections

New technology like 5G and IoT, IP migration, the move to 4K content, the shift from 40G to 100G Ethernet and emerging 400G technologies are changing the landscape in data centers, broadcast environments and entertainment venues.

More fiber connections are needed to handle these unavoidable demands. To ensure uptime and efficient operation and maintenance, there's also an increasing need to effectively manage these growing numbers of fiber connections.

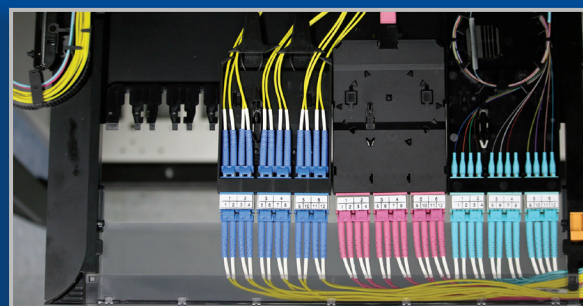
Introducing the DCX System

Handle large amounts of fiber connections and increase fiber density without compromising on ease of use. The new DCX System optimizes the ROI of your fiber infrastructure, reducing capital and operating expenses to offer lower total cost of ownership.

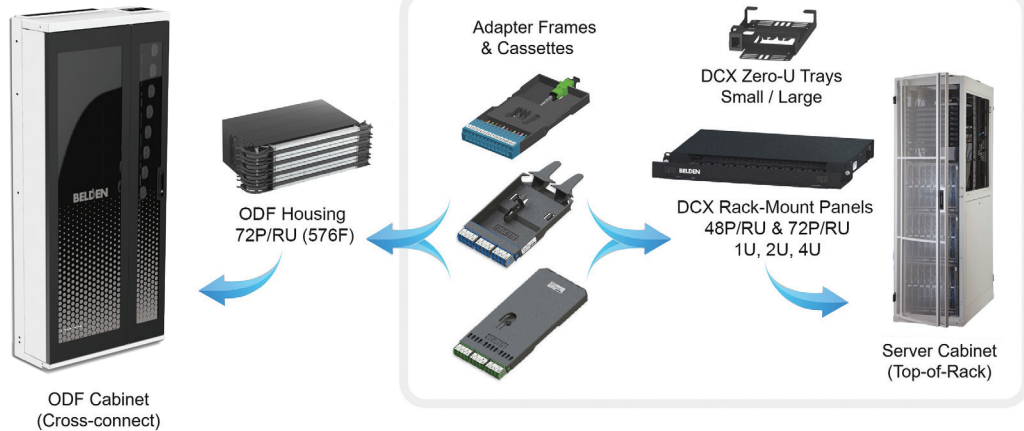
What makes the DCX System innovative?

- Extremely **high fiber termination density** available in a small footprint with 4,608* terminations per cabinet
- **Maximum signal integrity** through bend radius control for incoming and outgoing cables
- **Simple patch cord access** via pull-out trays and clearance around connectors
- **Futureproof functionality**, supporting migration from any combination of 8 or 12-fiber pre-terminated adapter frames and of Base-16-or Base-24 (soon to be released) pre-terminated adapter frames without infrastructure changes
- **Flexibility of termination methods**, including MPO trunk cables, multi-fiber trunk cables with LC connectors, fusion splicing with pigtails or splice-on connectors

Click [here](#) for the DCX System USA version.



Interchangeable DCX System Components



DCX Optical Distribution Frame (ODF) Cabinets

DCX ODF Cabinets are fully configurable, front-access cabinets that serve as the main building block for a large fiber cross-connect or as a high-density fiber interconnect. They protect fiber connections with a lockable front door and side panels that can be unclipped from the inside. Assemble side by side and/or back to back for scalability.

DCX ODF Cabinet Components

Order as a basic cabinet frame and dress on-site with doors, sides and cable management accessories. Pre-configured cabinets can be upgraded with additional cable entry brackets, cable distribution brackets and patch cord spools as fiber terminations increase. A patch cord management storage module can be inserted between side-by-side assemblies to manage patch cords that run to other cabinets. In-cabinet channel kits can create horizontal patch cord management channels.



Unlimited scalability with modular frames that act as building blocks

Benefits

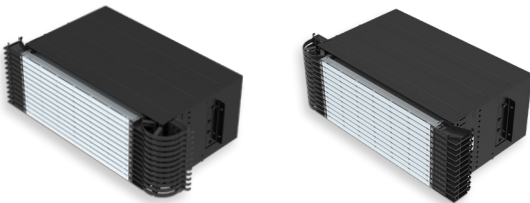
- Cable management accessories control bend radius of fiber cables and patch cords to protect signal integrity
- Place against a wall or in back-to-back arrangements to minimize use of floor space
- Simplify BOMs and save time during deployment with fully configured cabinets

Features

- Simple, easy-to-install accessories to dress incoming cables and patch cords
- Seismic frame made of 14-gauge steel meets Telcordia GR-63-CORE Zone 4 requirements
- Modular cabinets feature configurable item numbers

DCX Housings

DCX Housings are available in left-to-right and right-to-left cable flow configurations for optimized management. The housings have a front-access design with 12- tray options that pull out for easy access to cables connected to the back of adapter frames and cassettes. Modular cassettes can be mixed on the same tray (Base-8, Base-12, Base-16 or Base-24), enabling easy and cost-effective migration and preventing density loss.



Benefits

- Accelerate moves, adds and changes with easy patch cord access
- Tailor your system and adapt to changes by choosing your termination type
- Reduce mistakes and rework with labeling at connection ports
- Simplify maintenance with easy access to front and rear connections
- Maintain performance with slack management that prevents pinch points

Features

- Available in 1U, 2U and 4U configurations for scalability
- Supports Base -12/-8/-16/-24 deployments for futureproofing
- Accommodates 144 fiber connections per rack unit

Benefits

- Enhance signal integrity due to built-in cable bend radius control and strain relief
- Simplify management with full access around each connection for easy insertion and removal
- Reduce human error and connection issues with labeling space at the front and inside the patch cord cover for easy port reference

Features

- DCX Housings with front-access design and capacity of 576 fiber terminations (using LC connectors)
- Built-in cable and patch cord management on every tray
- Articulated cable channels provide protection and bend radius control for fiber cables entering housings

DCX Rack-Mount Patch Panels

DCX Housings are available in left-to-right and right-to-left cable flow configurations for optimized management. The housings have a front-access design with 12- tray options that pull out for easy access to cables connected to the back of adapter frames and cassettes. Modular cassettes can be mixed on the same tray (Base-8, Base-12, Base-16 or Base-24), enabling easy and cost-effective migration and preventing density loss.





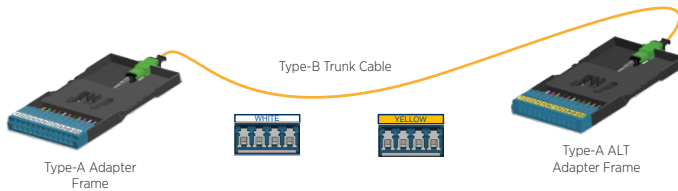
DCX Adapter Frames and Cassettes

DCX Adapter Frames and Cassettes have a modular, compact design that allows for assembly of two (Base-24), four (Base-12) or six (Base-8) cassettes per housing tray.



Efficient Fiber Polarity Management Using TIA-568 Method B (modified)

- Type-A cassettes maintain polarity (Tx to Rx) while using standard A-B patch cords on both ends of the fiber link.
- Alternate design maintains port sequence identical on both ends of the link.



Benefits

- Optimize system density regardless of termination method
- Reduce network downtime due to maintenance thanks to MPO pre-term adapter frame modularity; only 12 fibers are affected (as opposed to 24 or 36 fibers in other solutions)

Features

- Adapter frame available with LC, SC or MPO connector interface
- Pre-terminated adapter frames available in four-port (Base-8) and six-port (Base-12) configurations
- Splice cassettes available empty or preloaded with pigtails, splice holder and protectors

DCX Adapter Frames

Description	Belden Part Number				
Patch Ports (fibers)	OM3 Aqua Adapters	OM4 Erika Violet Adapters	OM5 Lime Green Adapters	OS2/UPC Blue Adapters	OS2/APC Green Adapters
MPO					
4 (48)	FF3D04MP	FF4D04MP	FF5D04MP	—	FFSD04MP
6 (72)	FF3D06MP	FF4D06MP	FF5D06MP	—	FFSD06MP
LC Duplex					
4 (8)	FF3D04LD	FF4D04LD	FF5D04LD	FFSD04LD	FFSD04LA
6 (12)	FF3D06LD	FF4D06LD	FF5D06LD	FFSD06LD	FFSD06LA
SC Duplex					
3 (6)	FF3D03SD	FF4D03SD	—	FFSD03SD	FFSD03SA



FF4D04MP and FFSD06LD

DCX Adapter Frames SmartPart Configurator

1. Choose Fiber Type 2. Choose Product Family 3. Choose Port Count (Patch Side) 4. Choose Connector

FF	3	D	04	LD
Type	Product Family	Port Count	Connector	
3 OM3	D DCX	04 4-Port	LD LC/UPC	
4 OM4		06 6-Port	LA LC/APC	
5 OM5			SD SC/UPC	
S OS2			SA SC/APC	
			MP MPO	



DCXS11-22121-22 - DCX Cabinet, Left-Right

DCX ODF Cabinets | Seismic 84x36x15 | 8 Housing

8 Cable Distribution Brackets, 8 Patch Cord Spools

Description	DCX Housings	Maximum Capacity LC Duplex Ports (fibers)	Belden Part Number
Left-Right, White, No Top Panel, No Bottom Panel, No Doors, No Side Panel, No Real Panel	8	2304 (4608)	DCXS11-00000-22
Right-Left, White, No Top Panel, No Bottom Panel, No Doors, No Side Panel, No Real Panel	8	2304 (4608)	DCXS21-00000-22
Left-Right, White, Brush + 8 Top Cable Entry Brackets, Brush + 8 Bottom Cable Entry Brackets, Bifold Plexi Door, Solid Side Panel, Full Rear Panel	8	2304 (4608)	DCXS11-33121-22
Right-Left, White, Brush + 8 Top Cable Entry Brackets, Brush + 8 Bottom Cable Entry Brackets, Bifold Plexi Door, Solid Side Panel, Full Rear Panel	8	2304 (4608)	DCXS21-33121-22
Left-Right, White, Brush + 8 Top Cable Entry Brackets, Brush + 8 Bottom Cable Entry Brackets, Bifold Plexi Door, No Side Panel, Full Rear Panel	8	2304 (4608)	DCXS11-33101-22
Right-Left, White, Brush + 8 Top Cable Entry Brackets, Brush + 8 Bottom Cable Entry Brackets, Bifold Plexi Door, No Side Panel, Full Rear Panel	8	2304 (4608)	DCXS21-33101-22



DCX-HINB KIT01B

DCX ODF Accessories

Description	Belden Part Number
DCX Cable Attachment Brackets - Top (4 Brackets for 24 Cables)	DCX-TOPE-KIT03W
DCX Cable Attach Brackets - Bottom (4 Brackets for 24 Cables) Office White	DCX-BOTE-KIT02W
DCX Cable Distribution Attachment Kit (1 Bracket w/ (2) Plastic Holders Up to 24 LPM Transition Per Holder) Black	DCX-CABV-KIT01B
DCX Patch Cord Spool Kit (1 Fixed Spool + Management Bar) Black	DCX-SPOO-KIT01B
DCX Horizontal In-Cabinet Channel Kit (One Patch Cord Tray) Central Office White	DCX-HINC-KIT01W
DCX Horizontal In-Cabinet Short Channel Kit (For End Cabinet) Central Office White	DCX-HINC-KIT02W
DCX Patch Cord Storage Module Central Office White w/ Black Door w/ 15 Spools	DCX-PCST-MOD01W
DCX Horizontal In-Cabinet Front-to-Back Patch Cord Bridge Black	DCX-HINB-KIT01B

DCX Cabinets SmartPart Configurator

1. Choose Type		2. Choose Cable Flow		3. Choose Color		4. Choose Top Panel		5. Choose Bottom Panel		6. Choose Door		7. Choose Side Panel		8. Choose Rear Panel		9. Choose Attachment		10. Choose Spools			
DCX	S	1	1	2	2	1	2	1	2	0	1	0	2	0	2	0	0	0	0		
Type	Cable Flow	Color	Top Panel	Bottom Panel	Doors	Side Panel	Rear Panel	Cable Attachment	Spools												
S	Seismic 84x36x15	1	Left-Right	1	White	0	None	0	None	0	None	0	None	0	None	0	None	0	None	0	None
		2	Right-Left	2	Black	1	Blank	1	Blank	1	Bifold-Plexi	1	Plexi	1	Full	0	4 Cable Distribution Brackets	1	4 Spools	0	None
						2	Brush + 4 Top Cable Entry Brackets	2	Brush + 4 Bottom Cable Entry Brackets	2	Bifold-Perf	2	Solid	2	Cable Management	1	8 Cable Distribution Brackets	2	8 Spools	0	None
				3	Brush + 8 Top Cable Brackets	3	Brush + 8 Bottom Cable Brackets	3	Bifold-Solid												

Please Note:

- By default, top, bottom, side and rear panels are powder coated to match frame color.
- By default, door, cable distribution brackets and spool metal supports are black medium texture.
- Standard white enclosures will have black doors and standard black enclosures will have black doors. Consult factory for special color options and/or enclosure configurations.

DCX Housings

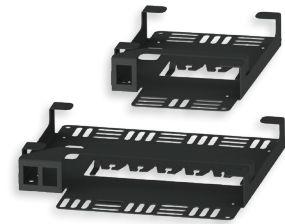
Description	Number of Modules		Total LC Duplex Ports	Cabinet Compatibility	Belden Part Number
	Base-12	Base-8			
576-Fiber, Left-Right Cable Flow, with 12 Trays, Trunk & Patch Management	48	72	288	8 Housing	DCX-04FM-LR
576-Fiber, Right-Left Cable Flow, with 12 Trays, Trunk & Patch Management	48	72	288	8 Housing	DCX-04FM-RL



DCX-04FM-LR and DCX-04FM-RL

Zero U Trays

Description	Number of Modules			Belden Part Number
	Base-24	Base-12	Base-8	
DCX Zero U Tray, Small with Magnets for 1 DCX Cassette Base-12, Black	—	1	1	DCX-ZUTR-S
DCX Zero U Bracket, Large with Magnets for 2 DCX Cassettes Base-12, Black	1	2	3	DCX-ZUTR-L



DCX-ZUTR-S and DCX-ZUTR-L

Rack-Mount Housings (96F/RU)

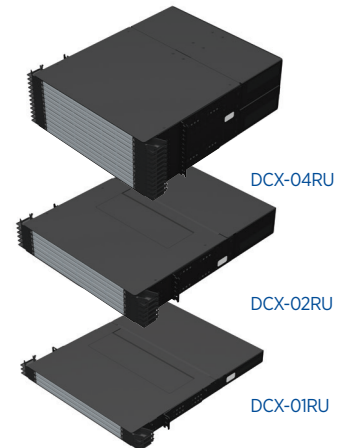
Description	Number of Modules		Total LC Duplex Ports	Belden Part Number
	Base-12	Base-8		
DCX 1U Patch Panel Housing 48-Port (1 Tray) Empty, Black Finish	8	12	48	DCX-01RM-048P
DCX 2U Patch Panel Housing 96-Port (2 Trays) Empty, Black Finish	16	24	96	DCX-02RM-096P
DCX 4U Patch Panel Housing 192-Port (4 Trays) Empty, Black Finish	32	48	192	DCX-04RM-192P



DCX-02RM-096P

Rack-Mount Housings (144F/RU)

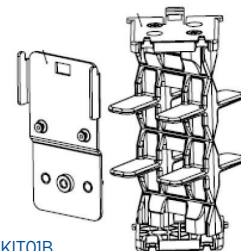
Description	Number of Modules		Total LC Duplex Ports	Belden Part Number
	Base-12	Base-8		
DCX 1U Patch Panel Housing 72-Ports (3 Trays), Empty, Black Finish	12	18	72	DCX-01RU
DCX 2U Patch Panel Housing 144-Ports (6 Trays), Empty, Black Finish	24	36	144	DCX-02RU
DCX 4U Patch Panel Housing 288-Ports (12 Trays), Empty, Black Finish	48	72	576	DCX-04RU
Cable Distribution Bracket, Holds up to 24 LPM, Black Finish				DCX-CABP-KIT01B



DCX-04RU

DCX-02RU

DCX-01RU



DCX-CABP-KIT01B



DCX Pre-Terminated Adapter Frames (MPO-LC)

Belden Part Number

Description Patch Ports (fibers)	OM3 Aqua Adapters	OM4 Erika Violet Adapters	OM5 Lime Green Adapters	SM Blue Adapters	SM/APC Green Adapters
6 (12) Type-A	FF3D06LDMFAA	FF4D06LDMFAE	FF5D06LDMFAL	FFSD06LDMFAB	FFSD06LAMFAG
6 (12) Type-A ALT	FF3D06LDMF1A	FF4D06LDMF1E	FF5D06LDMF1L	FFSD06LDMF1B	FFSD06LAMF1G
4 (8)	FF3D04LD4F4A	FF4D04LD4F4E	FF5D04LD4F4L	FFSD04LD4F4B	FFSD04LA4F4G



FF4D06LDMFAE and
FF4D04LD4F4E

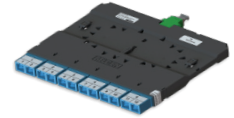
DCX Pre-Terminated Adapter Frames *SmartPart* Configurator

	1. Choose Fiber Type	2. Choose Product Family	3. Choose Port Count (Patch Side)	4. Choose Connector (Patch Side)	5. Choose Connector (Trunk Side)	6. Choose Type	7. Choose Color
	FF	4	D	06	LD	MF	A
	Fiber Type	Product Family	Port Count (Patch Side)	Connector (Patch Side)	Connector (Trunk Side)	Type	Color
	3 OM3	D DCX	04 4-port	LD LC Duplex	MF MPO-12 (12f) Female	A Type-A	A Aqua
	4 OM4		06 6-port	LA LC/APC Duplex	MM MPO-12 (12m) Male	1 Type-A ALT	E Erika Violet
	5 OM5				4F MPO-12 (8f) Female	4 SR4	B Blue
	S OS2				4M MPO-12 (8m) Male		G Green
							L Lime Green

DCX Pre-Terminated Cassettes (MPO-SC)

Belden Part Number

Description	Patch Ports (fibers)	OM3 Aqua Adapters	OM4 Erika Violet Adapters	OM5 Lime Green Adapters	SM Blue Adapters	SM/APC Green Adapters
SC Duplex to MPO-12 (12f) Female	6 (12)	FC3D06SDMF	FC4D06SDMF	-	FCSD06SDMF	FCSD06SAMF
SC Duplex to MPO-12 (8f) Female	4 (8)	FC3D04SD4F	FC4D04SD4F	-	FCSD04SD4F	FCSD04SA4F



FCSD06SDMF

DCX Splice Cassettes



FCSD12LDFP

Description	Patch Ports (fibers)	Belden Part Number					
		OM3 Aqua Adapters	OM4 Erika Violet Adapters	OM5 Lime Green Adapters	SM Blue Adapters	SM/APC Green Adapters	
LC Duplex - Includes 250 µm discreet pigtails, splice tray and heat shrink splice protector sleeves	6 (12)	FC3D06LDFP	FC4D06LDFP	FC5D06LDFP	FCSD06LDFP	FCSD06LAFP	
	12 (24)	FC3D12LDFP	FC4D12LDFP	FC5D12LDFP	FCSD12LDFP	FCSD12LAFP	
LC Duplex - Includes 250 µm ribbon pigtails, splice tray and heat shrink splice protector sleeves	6 (12)	FC3D06LDFM	FC4D06LDFM	FC5D06LDFM	FCSD06LDFM	FCSD06LAFM	
	12 (24)	FC3D12LDFM	FC4D12LDFM	FC5D12LDFM	FCSD12LDFM	FCSD12LAFM	
LC Duplex - Pigtailed, trays, protector sleeves sold separately	6 (12)	FC3D06LDFS	FC4D06LDFS	FC5D06LDFS	FCSD06LDFS	FCSD06LAFS	
	12 (24)	FC3D12LDFS	FC4D12LDFS	FC5D12LDFS	FCSD12LDFS	FCSD12LAFS	
SC Duplex - Includes 250 µm discreet pigtails, splice tray and heat shrink splice protector sleeves	6 (12)	FC3D06SDFP	FC4D06SDFP	-	FCSD06SDFP	FCSD06SAFP	
SC Duplex - Includes 250 µm ribbon pigtails, splice tray and heat shrink splice protector sleeves	6 (12)	FC3D06SDFM	FC4D06SDFM	-	FCSD06SDFM	FCSD06SAFM	
SC Duplex - Pigtailed, trays, protector sleeves sold separately	6 (12)	FC3D06SDFS	FC4D06SDFS	-	FCSD06SDFS	FCSD06SAFS	

DCX Splice Cassettes SmartPart Configurator

1. Choose Fiber Type		2. Choose Product Family		3. Choose Port Count (Patch Side)		4. Choose Connector (Patch Side)		5. Choose Connector (Trunk Side)		6. Choose Type		7. Choose Color	
FC		S		D		06		LA		FP		X	
Fiber Type	Product Family	Port Count (Patch Side)	Connector (Patch Side)	Connector (Trunk Side)	Type	Color							
3 OM3	D DCX	06 6-port	LD LC Duplex	FP Preloaded Stranded Pigtailed	X Pair Flipped	A Aqua							
4 OM4		12 12-port*	LA LC/APC Duplex	FM Preloaded w/Ribbon Pigtail		E Erika Violet							
5 OM5			SD SC Duplex	FS Empty		B Blue							
S OS2			SA SC/APC Duplex			G Green							
						L Lime Green							

* 12-port only available with LA and LD

FiberExpress MPO Trunks (Base-12, Base-8) SmartPart Configurator

1. Choose Fiber Type		2. Choose Connector		3. Choose Gender		4. Choose Polarity		5. Choose Connector Count		6. Choose Length		7. Choose Fire Rating		8. Choose Cable Construct		9. Choose Fan Out		10. Choose Jacket Color	
FM		4		M		M		B		4		010M		P		U		E	
Type	Connectors*	Connector Gender	Polarity (outside)	Connector Count	Length (m)	Fire Rating	Cable Construct	Fan Out	Jacket Color										
3 OM3	Base-12	M M	A Type-A (Straight Polarity)	Base-12	005M to 500M M Meters <small>*use M as decimal</small>	P Plenum	U µMini-D	E 1.0 m x In-Line	O Orange										
4 OM4	M MPO-12 (12F)	F F	B Type-B (Reversed Polarity)	1 12 Fibers		I I/O Plenum	M Mini-D		N Black										
5 OM5	Base-8			2 24 Fibers		A Plenum Armored (AIA)			Y Yellow										
S OS2	4 MPO-12 (8F)			4 48 Fibers					A Aqua										
				8 96 Fibers					E Erika Violet										
				D 144 Fibers					L Lime Green										
				Base-8															
				1 8 Fibers															
				3 24 Fibers															
				6 48 Fibers															
				D 96 Fibers															

Examples:

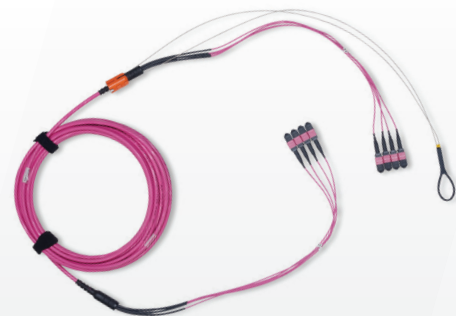
FM3MMB4050MPUEA - FX MPO Trunk, OM3, MPO-12 (Male to Male), Type-B, 4 MPO (48 Fibers), 50 m, OFNP, Mini-Distribution (2.0 mm Subunits), Fan-out: 1.0 m x In-line, Aqua Jacket

FM4MMB3050MPUEE - FX MPO Trunk, OM4, MPO-12 Base-8 (Male to Male), Type-B, 3 MPO (24 Fibers), 50 m, OFNP, Mini-Distribution (2.0 mm Subunits), Fan-out: 1.0 m x In-line, Erika Violet Jacket

FMSMMB8050MPUEY - FX MPO Trunk, OS2, MPO-12 (Male to Male), Type-B, 8 MPO (96 Fibers), 50 m, OFNP, Mini-Distribution (2.0 mm Subunits), Fan-out: 1.0 m x In-line, Yellow Jacket

FM4MMBD050MPUEY - FX MPO Trunk, OM4, MPO-12 Base-8 (Male to Male), Type-B, 12 MPO (96 Fibers), 50 m, OFNP, Mini-Distribution (2.0 mm Subunits), Fan-out: 1.0 m x In-line, Yellow Jacket

*If selecting Base-12 Connectors, choose from Base-12 Connector Count. If selecting Base-8 Connectors, choose from Base-8 Connector Count.





FiberExpress Multi-Fiber Trunks SmartPart Configurator

1. Choose Fiber Type		2. Choose Fiber Count		3. Choose Connector 1		4. Choose Cable Construction 1		5. Choose Connector 2		6. Choose Cable Construction 2		7. Choose Fire Rating		8. Choose Length	
A		4		LD		7		LD		7		P		030M	
Type	Fiber Count	Connector 1		Cable Construction 1		Connector 2		Cable Construction 2		Fire Rating		Length (m)			
3	OM3	08	8 Fibers	LD	LC Duplex	7	Jacketed 1.6 mm x 1.0 m x In-Line	LD	LC Duplex	7	Jacketed 1.6 mm x 1.0 m x In-Line	P	Plenum	005M to 500M M Meters *use M as decimal	
4	OM4	12	12 Fibers	LA	LC/APC Duplex	LA	LC/APC Duplex	LA	LC/APC Duplex	I	I/O Plenum				
5	OM5	24	24 Fibers	SD	SC Duplex	SD	SC Duplex	SD	SC Duplex	A	Plenum Armored (AIA)				
S	OS2	96	96 Fibers	SA	SC/APC Duplex	SA	SC/APC Duplex	SA	SC/APC Duplex						
		144	144 Fibers												

Examples:

A448LD7LD7P050M - FX Multi-Fiber Trunk, OM4, 48 Fibers, LC Duplex (Jacketed 1.6 mm x 1.0 m) - LC Duplex (Jacketed 1.6 mm x 1.0 m), OFNP, 50 m, Erika Violet Jacket

A396LD7LD7P050M - FX Multi-Fiber Trunk, OM3, 96 Fibers, LC Duplex (Jacketed 1.6 mm x 1.0 m) - LC Duplex (Jacketed 1.6 mm x 1.0 m), OFNP, 50 m, Aqua Jacket

AS96LD7LD7P050M - FX Multi-Fiber Trunk, OS2, 96 Fibers, LC Duplex (Jacketed 1.6 mm x 1.0 m) - MPO-12 (M) (Jacketed 1.6 mm x 1.0 m), OFNP, 50 m, Yellow Jacket



FiberExpress Patch Cords SmartPart Configurator

1. Choose Fiber Type		2. Choose Connector 1		3. Choose Connector 2		4. Choose Length*		5. Choose Fire Rating		6. Choose Cable Construction		7. Choose Polarity		8. Choose Jacket Color			
FP		3		LD		LD		03M5		R		1		X		A	
Fiber Type	Connector 1	Connector 2		Length*		Fire Rating		Cable Construction		Polarity		Jacket Color					
3	OM3	LD	LC Duplex	LD	LC Duplex	003M to 100M M Meters *use M as decimal		R	Riser	9	Simplex Cord 1.6 mm	X	A/B (Cross)	Y	Yellow		
4	OM4	LC	LC Simplex	LC	LC Simplex			P	Plenum	1	Duplex Zipcord 1.6 mm	S	A/A (Straight)	A	Aqua		
4	OM4	LA	LC/APC Duplex	LA	LC/APC Duplex					6	Round 2.0 mm	A	Type-A	E	Erika Violet		
S	OS2	LB	LC/APC Simplex	LB	LC/APC Simplex							B	Type-B	L	Lime Green		
		SD	SC Duplex	SD	SC Duplex												
		SC	SC Simplex	SC	SC Simplex												
		SA	SC/APC Duplex	SA	SC/APC Duplex												
		SB	SC/APC Simplex	SB	SC/APC Simplex												
		4F	MPO-12 (F) Base-8	4F	MPO-12 (F) Base-8												
		MF	MPO-12 (F) Base-12	MF	MPO-12 (F) Base-12												

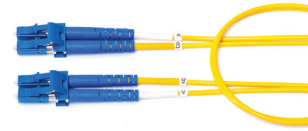
Examples:

FPSLDLD03M5R1XY - FX Patch Cord, OS2, LC Duplex - LC Duplex, 3.5 m, OFNR, Duplex Zip 1.6 mm, A-To-B, Yellow Jacket

FPSLBLB03M5R9SY - FX Patch Cord, OS2, LC Simplex/APC - LC Simplex/APC, 3.5 m, OFNR, Simplex 1.6 mm, A-To-A, Yellow Jacket

FP44F4F15M5P6BE - FX Patch Cord, OM4, MPO-12 Base-8 (F) - MPO-12 Base-8 (F), 15.5 m, OFNP, Round 2.0 mm, Type-B, Erika Violet Jacket

FP3LDDL03M5R1XA - FX Patch Cord, OM3, LC Duplex - LC Duplex, 3.5 m, OFNR, Duplex Zip 1.6 mm, A-To-B, Aqua Jacket



FiberExpress Flexible Ribbon Cables SmartPart Configurator

1. Choose FX Fiber Cable		2. Choose Fiber Type		3. Choose Family		4. Choose Fiber Count		5. Choose Fire Rating		6. Choose Subunit Type/Configuration	
F1		S		R		144		P		2	
FX Fiber Cable	Type	Family		Fiber Count		Fire Rating		Subunit Type			
FI	Indoor Cable	4	OM4	R	Flexible Ribbon Cable	012	12 Fibers	Plenum Group		0	250 µm, Non-Unitized
FD	Indoor/Outdoor Cable	S	OS2			024	24 Fibers	P	Plenum (OFNP)	2	3 mm x 12F
						036	36 Fibers	A	Plenum Interlocked Aluminum Armor (OFCP)	5	3 mm x 24F
						048	48 Fibers	Riser Group		Y	4.5 mm x 72F
						064	64 Fibers	R	Riser (OFNR)	Z	7.0 mm x 144F
						072	72 Fibers	F	Riser Interlocked Aluminum Armor (OFCR)		
						096	96 Fibers	LSZH/Riser Group			
						144	144 Fibers	L	LSZH/Riser (OFNR)		
						288	288 Fibers	C	LSZH/Riser Interlocked Aluminum Armor (OFCR)		
						576	576 Fibers				
						864	864 Fibers				

Notes:

- Plenum rating cable is only available in indoor cable 12-288f
- Riser/LSZH rating cable is only available in indoor cable 12-288f, Fiber count above 288f is only available in riser rating
- Indoor/outdoor cable is only available in riser rating 12-288f

Examples:

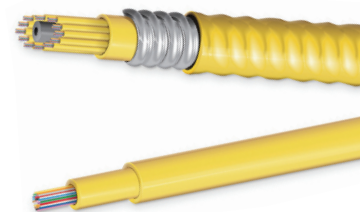
FISR024P0 - FX Indoor Flexible Ribbon OS2, 24 Fibers OFNP Double Jacket (Non-unitized)

FISR288P5 - FX Indoor Flexible Ribbon OS2, 288 Fibers OFNP Subunits 3.0 mm (24F)

FISR144L2 - FX Indoor Flexible Ribbon OS2, 144 Fibers LSZH/OFNR Subunits 3.0 mm (12F)

FISR576RZ - FX Indoor Flexible Ribbon OS2, 576 Fibers OFNR Subunits 7.0 mm (144F)

FDSR072R2 - FX Indoor/Outdoor Flexible Ribbon OS2, 72 Fibers OFNR Subunits 3.0 mm (12F)





Maximize signal integrity and usability with the high-density DCX end-to-end fiber infrastructure solution



Find out more at www.belden.com/products/dcx-optical-fiber-distribution-frame

KEY NORTH AMERICAN LOCATIONS

UNITED STATES

Division Headquarters

1320 City Center Drive, Suite 100
Carmel, IN 46032
USA
Phone: 317-818-6300
Inside Sales: 800-235-3361
Fax: 317-818-6382
info@belden.com

CANADA

National Business Center

2310 Alfred-Nobel
St-Laurent Quebec H4S 2B4
Canada
Phone: 514-822-2345
Inside Sales: 800-235-3361
Fax: 514-822-7979
info@belden.com

MEXICO

Regional Office

Av. de los Nogales
No. 290 Fracc. San Carlos,
Heroica Nogales C.P. 84090
Nogales, Sonora México
Phone: 52 0264 2060
Fax: 52 0264 2126
customerservice.mx@belden.com

For worldwide sales and technical support, visit: www.belden.com/about/locations



© 2025 | Belden and its affiliated companies claim and reserves all rights to its graphic images and text, trade names and trademarks, logos, service names, and similar proprietary marks, and any other intellectual property rights associated with this publication. BELDEN® and other distinctive identifiers of Belden and its affiliated companies as used herein are or may be pending or registered or unregistered trademarks of Belden, or its affiliates, in the United States and/or other jurisdictions throughout the world. Belden's trade names, trademarks, logos, service names, and similar proprietary marks shall not be reprinted or displayed without Belden's or its affiliated companies' permission and/or in any form inconsistent with Belden's business interests. Belden reserves the right to demand the discontinuation of any improper use at any time.